

RollLite RL21-75 / RL31-100 / RL31-150

RollITE

FOMEX®

Contents

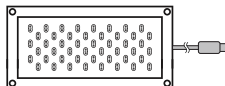
In the Box	2
Controller Overview	3
Set Up X-Mount & How to Connect	4
How to Install Clamp Shoe	5
Technical Specifications	6
Notice & Warranty	7
Inapplicable Warranty	8

Please read this operation instruction before using the product.

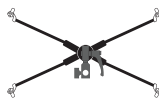
Stop using this product when abnormal operation is detected and contact the authorized dealer of its purchase location.

In the Box

RL21 Kit



RL21-75



X-Mount Bracket



Controller



Kit Bag



Extension Cable



Power Supply

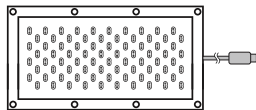


Power Cord(5m)



Clamp Shoe

RL31 Kit



RL31-100 / RL31-150



X-Mount Bracket



Controller



Kit Bag



Extension Cable



Power Supply

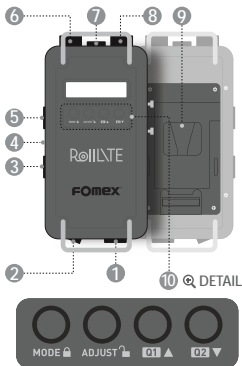


Power Cord(5m)



Clamp Shoe

Controller Overview



- 1 DC Input
- 2 ON/OFF Switch
- 3 DMX Out
- 4 USB (5V DC Out)
- 5 DMX In
(If DMX connection works properly, the status indicator will turn on green)
- 6 CCT Knob – Color Temperature Adjustment
- 7 Output Port
- 8 Dimmer Knob - Brightness Adjustment
- 9 Battery Plate (Standard: V-Mount, Optional: Gold Mount)

10 Button Control Guide

Lock CCT and DIM: Press MODE button for 2–3 seconds. LOCK will display and turn to lock mode.

If in Lock mode, CCT and DIM cannot be changed.)

Unlock: Press ADJUST button for 2–3 seconds to release.

Quick Mode: Short Press MODE button to change to Quick Mode. The Default setting of Q1(3200K), Q2(5600K) can be changed. DIM and CCT can be adjusted to desired value.

Set desired CCT: Press ADJUST button on Quick Mode.

When CCT and DIM value blink, change to the desired value using the dial, then press ADJUST button again.

Default Mode: Long press Q1 button on Quick Mode then press Q2 button to return to Default Mode.

Release QUICK Mode: Press MODE button once to get DMX channel setting screen.

(CCT and DIM value will go back to the previous value in normal mode)

Set DMX Channel: Short press MODE button twice, DMX will be displayed and channel blinks for change.

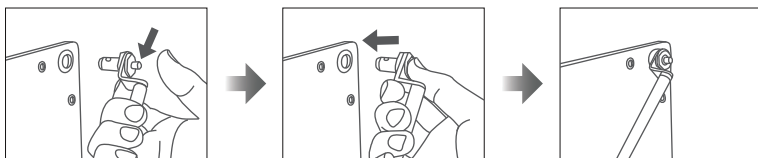
Then set the channel using button and press ADJUST button to save.

(When connecting DMX Console, DMX channel mode will display automatically.)

Press MODE button once and change the channel using button and press ADJUST button to save.)

Default Mode → Quick Mode → DMX Channel Setting Mode → Default Mode

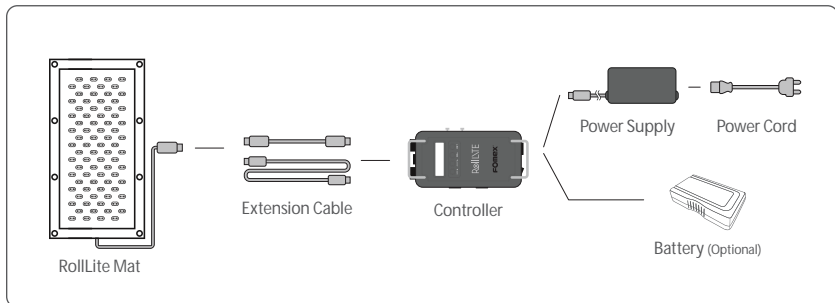
Set Up X-Mount



The included X-Mount frame can be quickly and easily mounted to the RollLite using the push-pin one-touch locking inserts.

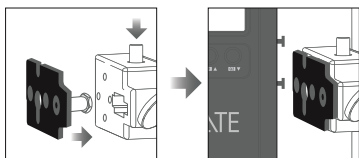
How to Connect

Please connect the power supply or battery in the following order.



* Please use the supplied extension cable only.

How to Install Clamp Shoe



Mount the clamp with the Clamp Shoe to a light stand then, the controller.

Technical Specifications

Spec.	RL21-75	RL31-100	RL31-150
Light Output	1500lux @1m; 2700K, 1720lux @1m; 6500K	2000lux @1m; 2700K, 2300lux @1m; 6500K	3100lux @1m; 2700K, 3500lux @1m; 6500K
Power Consumption	75W	100W	150W
CRI / TLCI	CRI 96-98 / TLCI 98		
Color Temperature	2700K-6500K		
Dimmer	0-100% DIM / DMX 512 / Manual		
Color Temp. Control	100K Steps		
Output Connector <small>(Waterproof)</small>	6Pin × 1		
Mat IP Rating	IP64		
Input	12-24V DC (4Pin)		
DC Out	5V DC Out (USB for WDMX)		
DMX In / Out	5Pin XLR		
Beam Angle	120°		
LEDs	312	432	684
Battery Mounts	V-Mount / Gold Mount		
Dimensions (ft)	2' × 1' (66 × 34cm)	3' × 1' (91 × 46cm)	3' × 1' (91 × 46cm)
Weight (g)	440	700	720
Controller	Input : 12-24V DC		
	Display : Mono LCD		
	CCT : 2700K-6500K		
	DIM : 0-100%		
	Dimensions (mm) : 234 × 108 × 79.7		
Power Supply	Weight (g) : 934		
	Input : AC100-240V 50/60Hz Output : 19V = 11.58A, 220W		

Notice

Please read this operation instruction before using the product.

- Please use the supplied AC Adapter only.
- IP64 has a protection against dust and splashed water, but should not be used in water.
When Mat is wet, dry surface and store in dry place. (Controllers are not waterproof.)
- Keep away from flammable objects.
- The proper operating temperature is from 0°C ~ 40°C. Do not expose the product to extreme cold or hot.
- Keep away from children.
- Do not drop or give a shock to the product.
- Turn off power after use and store the product in the supplied bag after fully cooling and drying.

Warranty

Warranty provisions for the product are listed below. Fomex is not responsible for damage arising from failure to follow instructions relating to the Fomex product's use.

If a defect of the product arises and a valid claim is received within the warranty period, Fomex will either repair the defect at no charge, using new or refurbished replacement parts, or exchange the product with a product that is new or which has been manufactured from new or serviceable used parts and is at least functionally equivalent to the original product.

This warranty applies only to products manufactured by Fomex that can be identified by the trademark, trade name, or logo affixed to the product.

Inapplicable Warranty

1. Expired warranty period
2. Breakage or damage caused by inappropriate usage, repair, maintenance and accident.
 - 1) Installation and removal with improper external equipment or improper usage.
 - 2) Damage to the product caused by external fault or any accident.
 - 3) Exposure to the extreme environment such as abnormal temperature, a solvent, an acid, a base, a flood and a humidity.
 - 4) External damage like scratch, crush or crack.
3. Damage caused by installation, repair, improvement, addition, disassembly by unauthorized institution or person.
4. Modified, replaced, removed information identifying the original product
5. Absence of valid warranty card
6. Unusable or damage caused by use of illegal nonstandard and unofficial software
7. Damage caused by accident, abuse, misuse, flood, fire, earthquake or other external causes.

Please keep the proof of purchase and this warranty card for future service.

Customer Information	Name	
	Contact Number	
	Address	
Seller Information	Name	
	Contact Number	
	Address	
	Purchasing date	
Product	Name	



www.fomex.com

Unit701, 31-18Gil, Seongsui-ro, Seongdong-gu, Seoul Korea 04787

Tel: +82 2 545 0004 Fax: +82 2 3444 9399 E-mail: info@fomex.com

All product specifications are subject to change without notice.



VER.201903